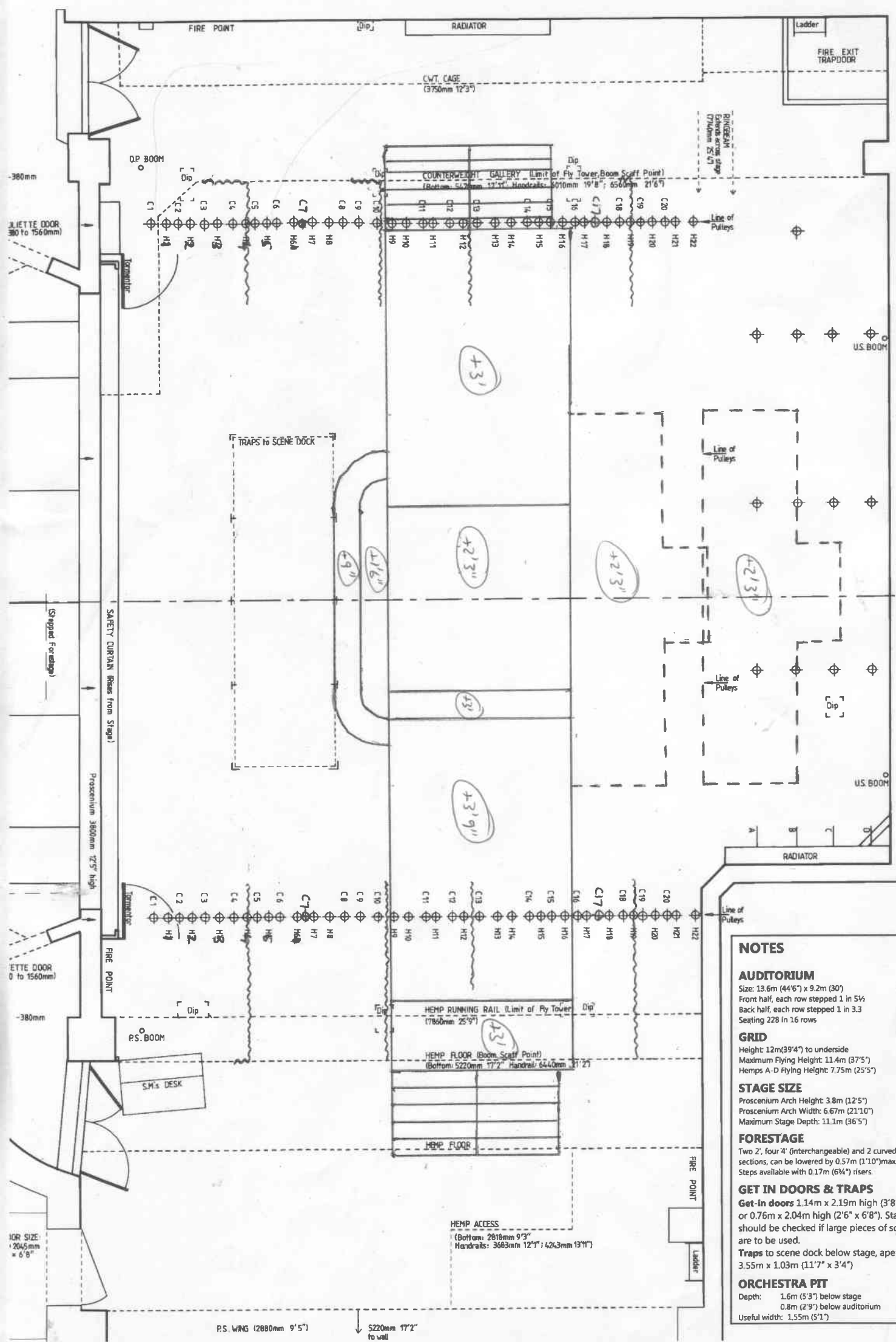


PRODUCERS FLOOR PLAN - NO FLOWN SET SHOWN

SEE ALSO ADDITIONAL NOTES



**NOTES**

**AUDITORIUM**  
 Size: 13.6m (44'6") x 9.2m (30')  
 Front half, each row stepped 1 in 5 1/2  
 Back half, each row stepped 1 in 3.3  
 Seating 228 in 16 rows

**GRID**  
 Height: 12m (39'4") to underside  
 Maximum Flying Height: 11.4m (37'5")  
 Hems A-D Flying Height: 7.75m (25'5")

**STAGE SIZE**  
 Proscenium Arch Height: 3.8m (12'5")  
 Proscenium Arch Width: 6.67m (21'10")  
 Maximum Stage Depth: 11.1m (36'5")

**FORESTAGE**  
 Two 2', four 4' (interchangeable) and 2 curved sections, can be lowered by 0.57m (1'10") max. Steps available with 0.17m (6") risers.

**GET IN DOORS & TRAPS**  
 Get-in doors 1.14m x 2.19m high (3'8" x 7'2") or 0.76m x 2.04m high (2'6" x 6'8"). Staircase should be checked if large pieces of scenery are to be used.  
 Traps to scene dock below stage, aperture 3.55m x 1.03m (11'7" x 3'4")

**ORCHESTRA PIT**  
 Depth: 1.6m (5'3") below stage  
 0.8m (2'9") below auditorium  
 Useful width: 1.55m (5'1")

P.S. WING (2880mm 9'5")  
 5220mm 17'2" to wall